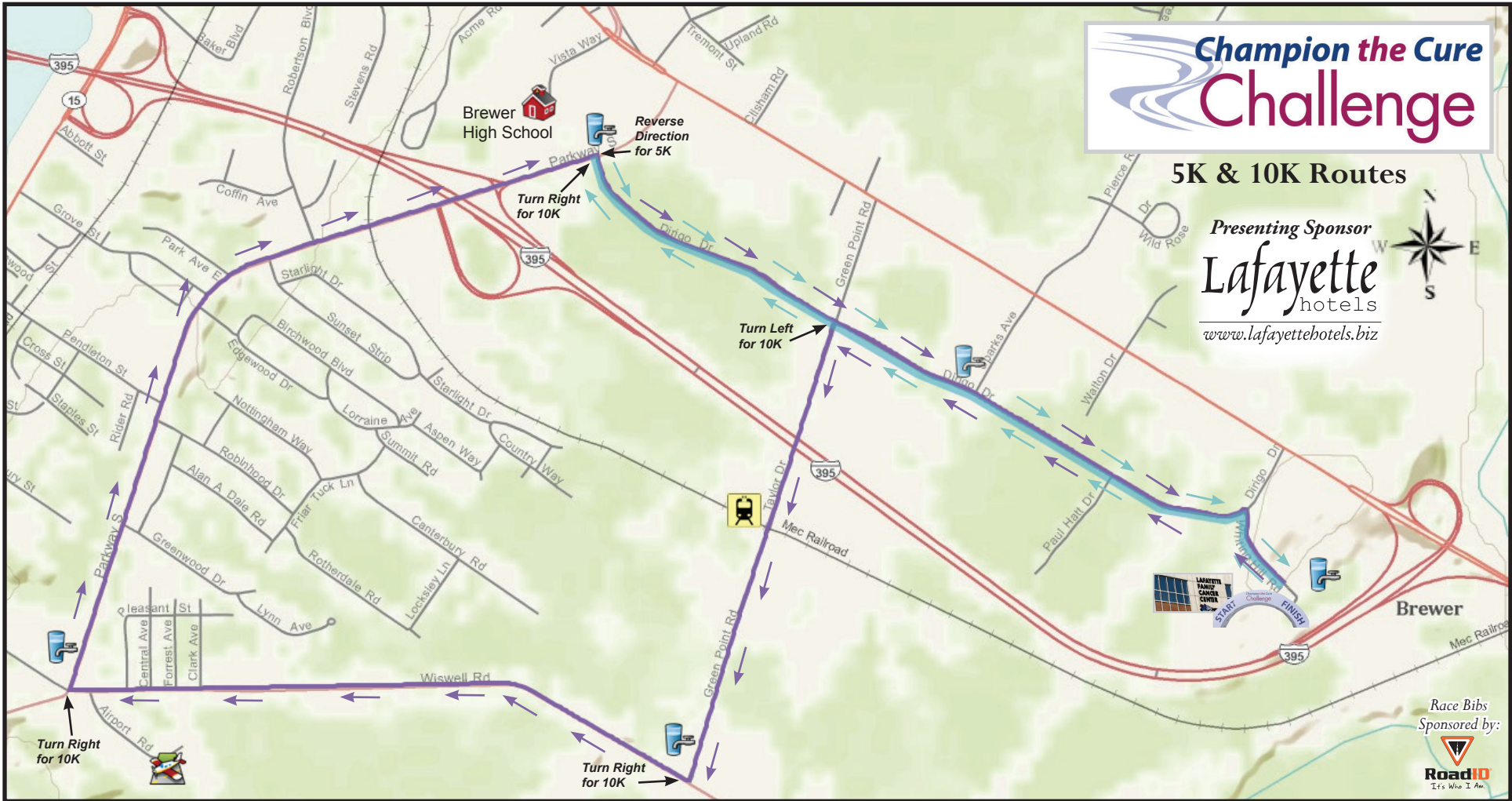


# Champion the Cure Challenge

## 5K & 10K Routes

Presenting Sponsor  
**Lafayette**  
 hotels  
[www.lafayettehotels.biz](http://www.lafayettehotels.biz)



Race Bibs  
 Sponsored by:  
 RoadID  
 It's Who I Am

### 5K Route

Start at Lafayette Family Cancer Center  
 Turn Left onto Dirigo Drive  
 Follow Dirigo Drive to Parkway South  
 Turn Around at Parkway South  
 Return to Start

### Map Legend

Start/Finish Line at the Lafayette Family Cancer Center

Water Stop (Please See Sponsors Below)

Toyota

Peoples United Bank

B.T.C. bangor tire company

Best Western White House Inn

Dead River Company

Pembroke Eye Care

Darling's

### 10K Route

Start at Lafayette Family Cancer Center  
 Turn Left onto Dirigo Drive  
 Turn Left onto Green Point Road  
 Turn Right onto Elm Street  
 Turn Right onto Parkway South  
 Turn Right onto Dirigo Drive  
 Return to Start

TOGETHER We're Stronger

## Participant Safety & Support

EMTs are provided by Capital Ambulance and are located at the front entrance of CancerCare of Maine.

If faced with an emergency situation we ask that you DIAL 911

*If uncertain about your need please contact:*

CTCC Safety Leader Karen Marsters at (207) 478-5578

## Schedule of Events

### Friday Night - August 17

**5:00pm - 8:00pm** Walk/Run & ALL Cyclists: Pasta Dinner and Packet pick up  
**5:00pm - 7:00pm** Rock Revelation

### Saturday - August 18

**6:30am - 10:30am** Walk/Run Packet pick-up and New Registration

**6:30am - 3:00pm** Water Sponsored by Pepsi

**7:00am - 11:00am** Tim Hortons Breakfast!

**7:00am** Group Cyclers Send Off

**8:00am** Bone Marrow Donor Drive opens

**8:30am** Group Walkers/Runners Send Off

**8:30am - 10:00am** Welcome back our 25 mile Cyclists!

**9:00am** Group Family Fun 1K Walk/Run Send Off

**9:00am** Massage by A Body in Knead Open!

**10:00am - 3:00pm** Tours of EMMC's CancerCare of Maine by the CancerCare Staff

**10:00am** Whoopy Kat Performs!

**10:30am - 12:00pm** Welcome back our 50 mile Cyclists!

**10:30am** Group Motorcycle Riders Send Off

**11:00am - 2:00pm** Lunch provided by Giacomo's, Hollywood Casino, Jason's Pizza & Pizza Gourmet!

**11:00am - 3:00pm** Tim Hortons' Fruit Smoothies and Frozen Lemonade!

**11:00am - 12:00pm** Community Awards and CCOM Presentation (Presenters include: Dr. Sarah Sinclair, Dr. Tom Openshaw, Allen L'Italian CancerCare Director).

**12:00pm** Whoopy Kat Performs!

**12:30pm - 3:00pm** Welcome back our 100 mile Cyclists!

**1:30pm - 3:00pm** Welcome back our Motorcycle Riders!

**2:00pm** Participant Awards & Grand Prize Drawing for a Dream Date which includes: Katahdin Flight for Two, Dinner for Two and Table for Two at Anthony John's Salon & Day Spa (Couples Massage and more). *(Must be present to win)*  
**3:00pm - 4:00pm** Breakdown

## FAQs

### ***Q: What is Flexible Start?***

**A:** Champion the Cure Challenge offers both group departure and independent departure of cyclists, walkers and runners. You may follow the schedule and leave with other participants - or, head off on your own.

### ***Q: What are the hours for Route Support?***

**A:** Water Stations on the Walk/Run Routes are open from 8:00am-1pm. Cycling Route Rest Stops are open for 4 hours beginning at 7:00am and hours are based on a 7:00am departure. SAG support will run in the same manner. All Route Rest Stops & SAG support ends at 3:30pm.

### ***Q: Are pets allowed?***

**A:** While we love pets, only service dogs are invited to The Challenge.

### ***Q: How do I get one of your custom jerseys?***

**A:** Jerseys are given to all that raise \$1,000 or more. You can continue to raise funds after the event!

### ***Q: Where are the restrooms?***

**A:** Port a Potties are located in the parking area just past the Start/Finish Line.



[www.facebook.com/CTCCChallenge](http://www.facebook.com/CTCCChallenge)



[www.twitter.com/CTCCChallenge](http://www.twitter.com/CTCCChallenge)

TOGETHER We're Stronger



inspiring confidence in care